

# Burkridge

## Standard Features

- Review of Durability, Quality & Performance Measures
- Multiple Under Construction Inspections
- Fast Recovery Water Heater
- Professionally Designed & Sized HVAC System
- Efficient 13 SEER HVAC System
- R-13 Wall & R-30 Ceiling Insulation
- Sealed Thermal Building Envelope
- Complete Air & Moisture Wrap
- Sealed Exterior Building Penetrations
- Low Maintenance Drought Tolerant Landscaping
- Underground Utilities

## Exterior Features

- Craftsman Style Columns
- Low Maintenance Vinyl Siding
- 25 Year Roof Shingle
- Sodded Yard up to 12 Pallets
- Landscape Package
- Board & Batton Shutters (Front)
- Vinyl Soffits with Aluminum Fascia
- Exterior Hose Bibs (2)
- Exterior Receptacles (3)
- ENERGY STAR Insulated Low-E Windows
- Street Lamp

## Foyer

- Brushed Nickel Lighting
- Vinyl Flooring

## Living Room

- Ceiling Fan
- 25 oz Carpet with 6lb Upgraded Pad
- Vaulted ceiling

## Dining Room

- Brushed Nickel Lighting
- Vinyl Flooring

## Kitchen

- Brushed Nickel Lighting
- Vinyl Flooring
- Laminate Countertops
- 30" Cabinets with Crown
- White Appliances: Flattop Stove, Dishwasher & Microwave
- Food Waste Disposal
- Stainless Steel Kitchen Sink

## Bedrooms

- Master Bedroom Prewired For Fans
- 25 oz Carpet with 6lb Upgraded Pad

## Bath Rooms

- Brushed Nickel Vanity Lights
- Vinyl Flooring
- Chrome Faucets
- Marble Vanity Tops

## Laundry Room

- Washer & Dryer Hookups
- Vinyl Flooring

## Covered Porches

- Craftsman-Stone Columns
- Vinyl Ceiling
- Exterior Light

## Miscellaneous

- Cable in all Bedrooms & Living Room
- Telephone/Internet 2 Locations
- Brushed Nickel Hardware
- Ventilated Shelving in All Closets
- Flat Wall Paint (off white)
- Semi Gloss Trim Paint (white)
- Six Panel Entry Door (white)
- 8 Year RWC Warranty

**Ameri Built Homes**<sup>®</sup>

Your Home...Your Dream...Your Builder.

**Aaron Ramey**

**(843) 504-0456**

**AmeriBuilt-Homes.com**

\* All selections are from builders samples.

# Burkridge

Plan	Price	BR	BA	Garage	Heated SF	Total SF
Millwood	\$ 99,900	3	2	-	1,200	1,282
Gleason	\$ 109,900	3	2	2	1,080	1,534
Millwood-1 Car	\$ 112,900	3	2	1	1,200	1,522
Millwood-2 Car	\$ 119,900	3	2	2	1,200	1,682
Palmetto	\$ 124,900	3	2	2	1,311	1,836
Wisteria	\$ 129,900	3	2	2	1,451	1,836

**Contact:**

**Aaron Ramey**

**(843) 504-0456**

**[aaron@ameribuilt-homes.com](mailto:aaron@ameribuilt-homes.com)**

**[www.AmeriBuilt-Homes.com](http://www.AmeriBuilt-Homes.com)**





## Option Sheet

Option Sheet	
<b>Square Footage Additions</b>	
Screen Porch	\$45 per sq ft.
Garage	\$45 per sq ft.
Additional Heated Square Footage	\$65 per sq ft.
Covered Porch	\$40 per sq ft.
<b>Fire Places</b>	
Gas Fire Place Ventless w/ Logs	\$2,800
<b>Plumbing</b>	
Garden Tub <i>(Replaces Standard)</i>	\$400
Whirlpool Tub <i>(Replaces Standard)</i>	\$1,000
Whirlpool Tub w/ Shower <i>(Replaces Standard)</i>	\$1,200
Water Heater Upgrade 80 Gallon <i>(Replaces Standard)</i>	\$300
Extra Plumbing Fixture	\$500
<b>Appliances</b>	
Black <i>(Replaces Standard White)</i>	\$200
Refrigerator	\$862
<b>Electrical</b>	
Extra Cable <i>(4 Standard)</i>	\$45
Extra Phone <i>(2 Standard)</i>	\$45
Extra Outlet <i>(110V)</i>	\$45
Extra Outlet <i>(220V)</i>	\$150
Pre-Wire Fan	\$35
Fan with Light Kit	\$125
Flood Lights	\$75
Can Lights	\$95
<b>Interior</b>	
Pocket Door <i>(Single)</i>	\$150
Additional Slider <i>(Replaces Window)</i>	\$200
Levered Handles <i>(Each)</i>	\$20.00
French Door <i>(Replaces Slider)</i>	\$350
<b>Garage</b>	
Door Opener <i>(w/ 2 Remotes)</i>	\$350
Door Opener <i>(Key Pad)</i>	\$75
Extra Remote	\$40
Windows In Garage Door	\$200
Insulate 2 Car Garage	\$425
Insulate 1 Car Garage	\$325
Garage Entry Door-6 Panel	\$250
Garage Entry Door-Partial Glass	\$350
Sheetrock 2 Car Garage	\$850
Sheetrock 1 Car Garage	\$425
<b>Exterior Options</b>	
Stone Accents	Priced Per Plan
Shake Accents <i>(Replaces Standard)</i>	Priced Per Plan
Additional Concrete <i>(Per Sq Ft)</i>	\$5
Additional Shutters <i>(Per Pair)</i>	\$100
<b>Landscaping</b>	
Irrigation	Priced Per Job
Additional Centipede Sod <i>(Installed Per Pallet)</i>	\$200

Disclaimer: All prices subject to change without notice. Options not available on all models. Buyer subject to varification.

# Burkridge



## *The Millwood*

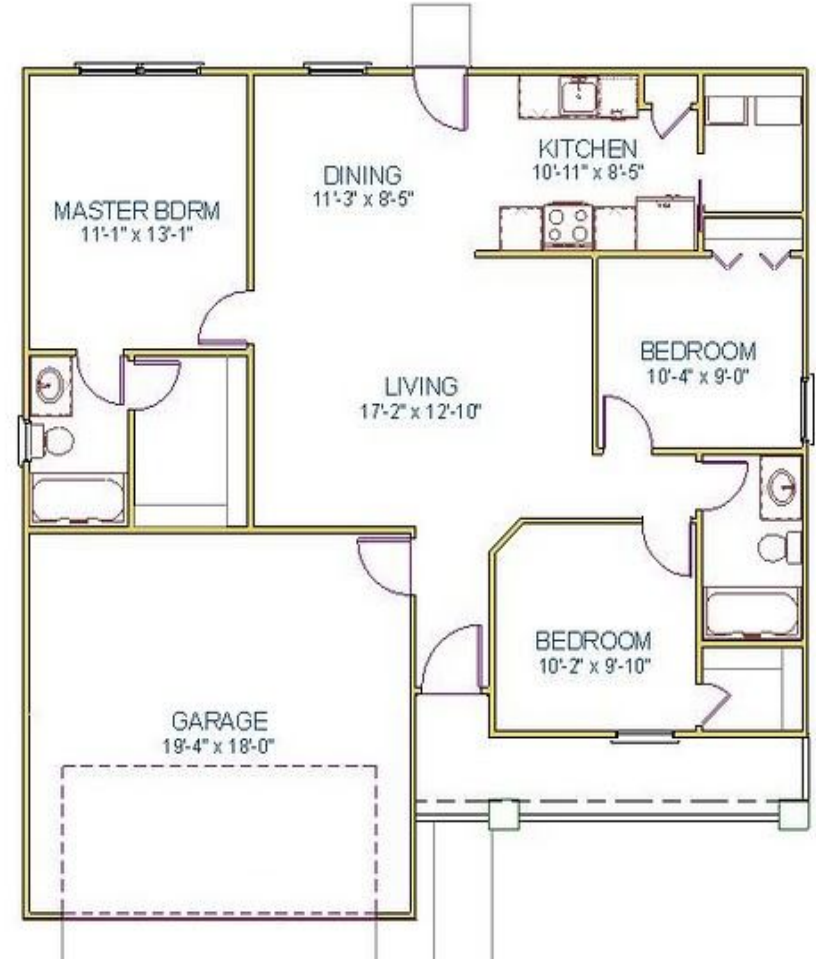
**1,200 Heated/1,282 Total SF**  
**3 Bedrooms**  
**2 Baths**

**For More Information  
Contact:**

**Aaron Ramey**  
**(843) 504-0456**  
[aaron@ameribuilt-homes.com](mailto:aaron@ameribuilt-homes.com)  
[www.AmeriBuilt-Homes.com](http://www.AmeriBuilt-Homes.com)



# Burkridge



## *The Gleason*

**1,080 Heated/1,534 Total SF**

**3 Bedrooms**

**2 Baths**

**2 Car Garage**

**For More Information**

**Contact:**

**Aaron Ramey**

**(843) 504-0456**

[aaron@ameribuilt-homes.com](mailto:aaron@ameribuilt-homes.com)

[www.AmeriBuilt-Homes.com](http://www.AmeriBuilt-Homes.com)



# Burkridge



## *The Millwood*

*w/ 1 Car Garage*

**1,200 Heated/1,522 Total SF**

**3 Bedrooms**

**2 Baths**

**For More Information**

**Contact:**

**Aaron Ramey**

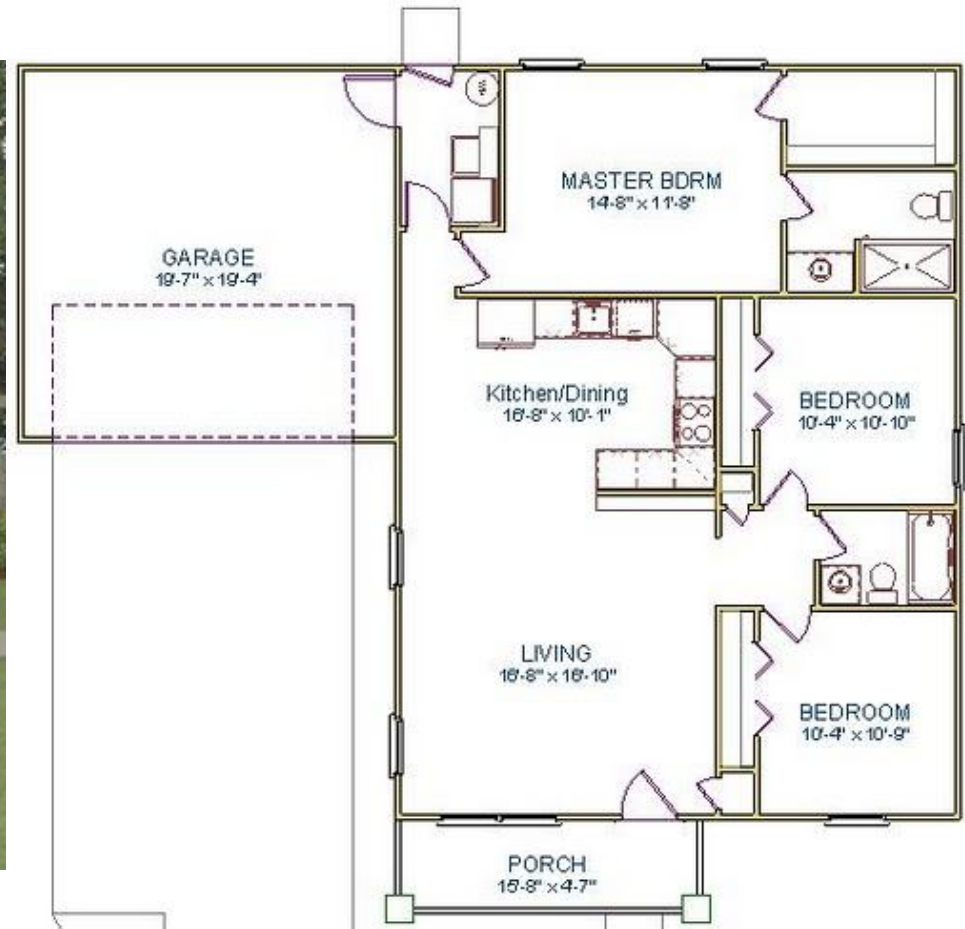
**(843) 504-0456**

[aaron@ameribuilt-homes.com](mailto:aaron@ameribuilt-homes.com)

[www.AmeriBuilt-Homes.com](http://www.AmeriBuilt-Homes.com)



# Burkridge



## *The Millwood*

*w/ 2 Car Garage*

**1,200 Heated/1,682 Total SF**

**3 Bedrooms**

**2 Baths**

**For More Information  
Contact:**

**Aaron Ramey**

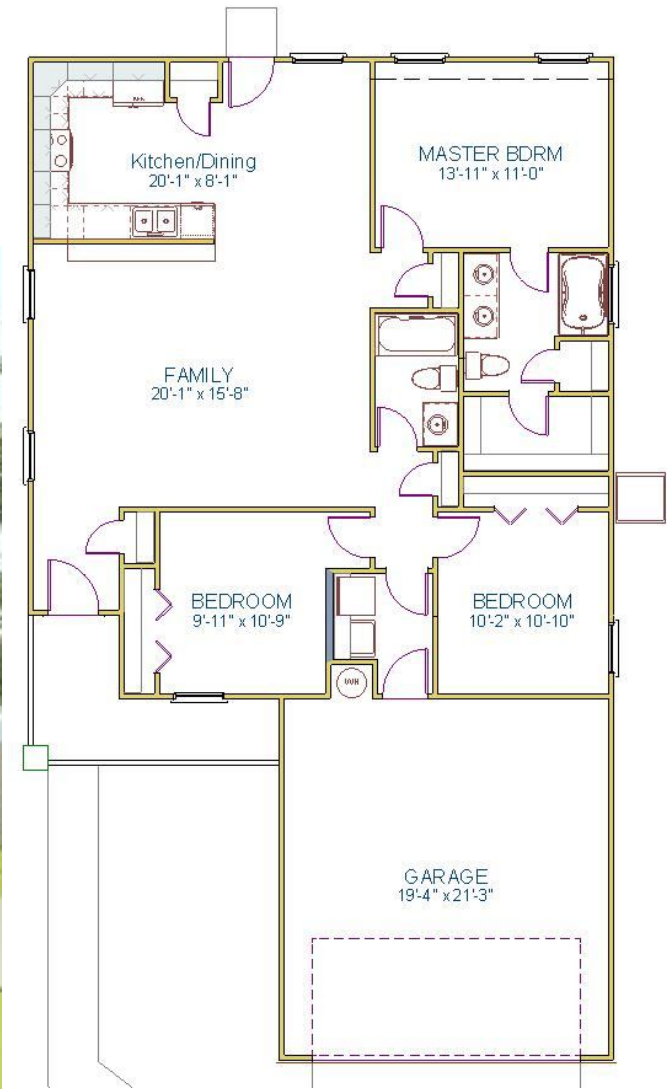
**(843) 504-0456**

[aaron@ameribuilt-homes.com](mailto:aaron@ameribuilt-homes.com)

[www.AmeriBuilt-Homes.com](http://www.AmeriBuilt-Homes.com)



# Burkridge



## *The Palmetto*

**1,311 Heated/1,836 Total SF**

**3 Bedrooms**

**2 Baths**

**2 Car Garage**

**For More Information**

**Contact:**

**Aaron Ramey**

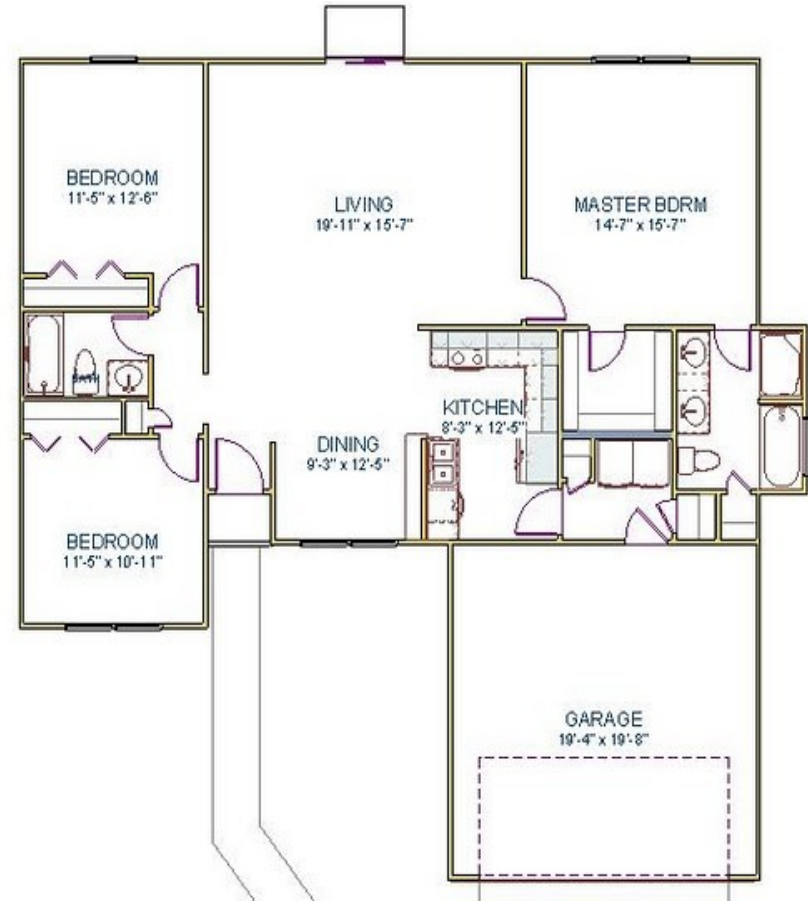
**(843) 504-0456**

**aaron@ameribuilt-homes.com**

**www.AmeriBuilt-Homes.com**



# Burkridge



## *The Wisteria*

**1,451 Heated/1,863 Total SF**  
**3 Bedrooms**  
**2 Baths**  
**2 Car Garage**

**For More Information  
Contact:**

**Aaron Ramey**  
**(843) 504-0456**

**aaron@ameribuilt-homes.com**  
**www.AmeriBuilt-Homes.com**

